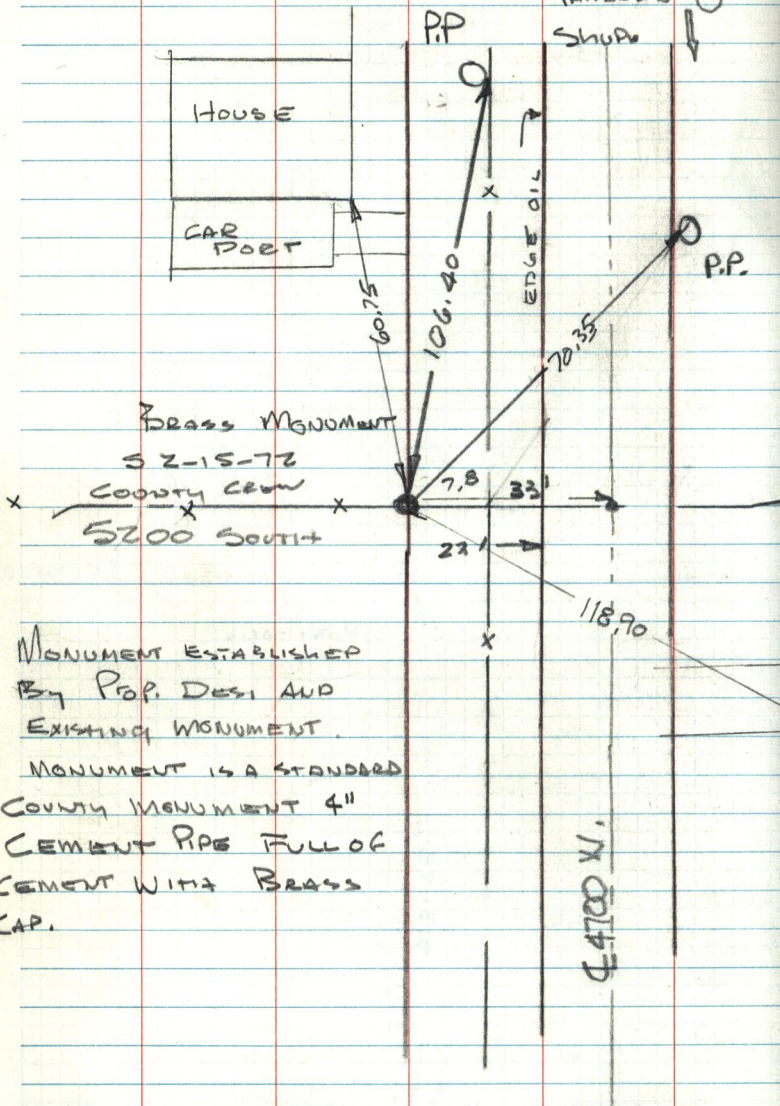


# CENTER SECTION 17

TSNEZKI

H12  
PATTERSON  
SHURP



MONUMENT ESTABLISHED  
BY POP. DESI AND  
EXISTING MONUMENT.

MONUMENT IS A STANDARD  
COUNTY MONUMENT 4"  
CEMENT PIPE FULL OF  
CEMENT WITH BRASS  
CAP.